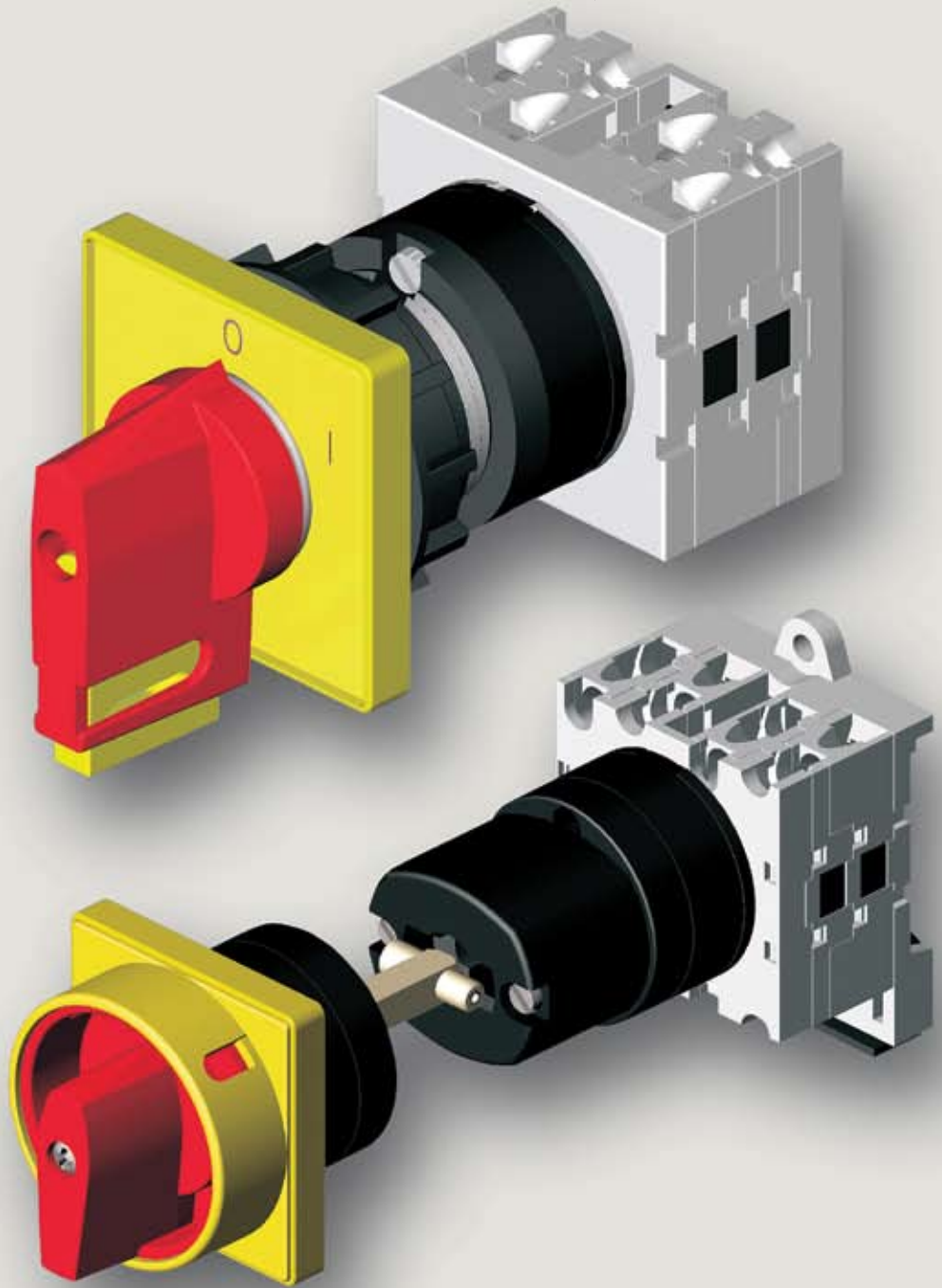


# CONTROL SWITCHES

"X"

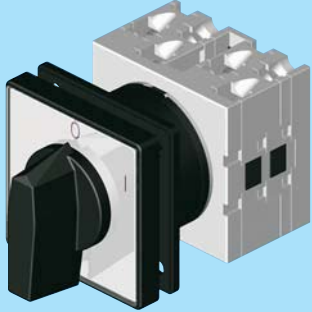

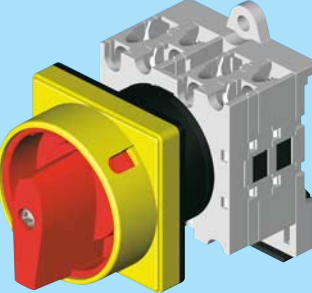
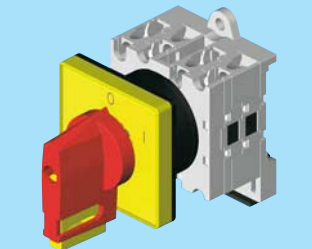
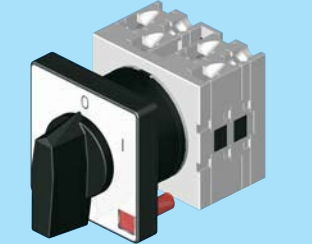
S  
E  
R  
I  
E  
S



## ROTARY CAM SWITCHES

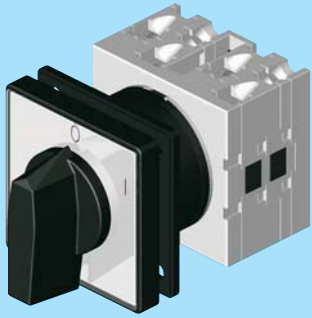

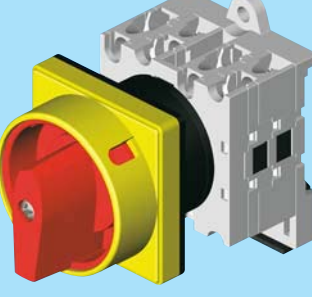
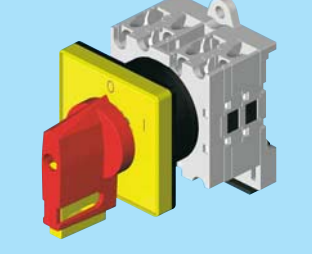
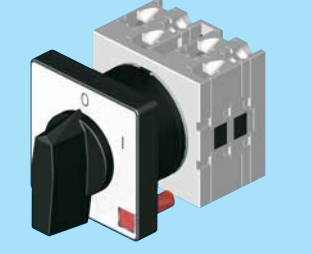
Control Switches International, Inc.

# STANDARD DESIGNS AND OPTIONAL EXTRAS

NAME	FORM	CODE				DESCRIPTION		
		1	2	3	4			
H, N  FRONT MOUNTING		X16	-	...	-	U	Standard front mounting - front assembly □48	
		X20	-	...	-	U		
		X32	-	...	-	U	Standard front mounting - front assembly □65	
		X40	-	...	-	U		
		X16	-	...	-	U	01	Front protection IP54 (no possibility for front plate with title - <del>X</del> )
		X20	-	...	-	U	01	
		X32	-	...	-	U	01	
		X40	-	...	-	U	01	
		X16	-	...	-	U	51	Front protection IP65
		X20	-	...	-	U	51	
X32	-	...	-	U	51			
X40	-	...	-	U	51			
H, N  REAR MOUNTING		X16	-	...	-	O	Standard rear mounting - front assembly □48	
		X20	-	...	-	O		
		X32	-	...	-	O	Standard rear mounting - front assembly □65	
		X40	-	...	-	O		
		X16	-	...	-	O	01	Front protection IP54
		X20	-	...	-	O	01	
		X32	-	...	-	O	01	
		X40	-	...	-	O	01	
		X16	-	...	-	O	51	Front protection IP65
		X20	-	...	-	O	51	
X32	-	...	-	O	51			
X40	-	...	-	O	51			
H, N  SWITCH WITH ROUND PADLOCK		X16	-	...	-	U/O	06	The grey colour of handle and front plate
		X20	-	...	-	U/O	06	
		X32	-	...	-	U/O	06	
		X40	-	...	-	U/O	06	
		X16	-	...	-	U/O	23	Main switch - black handle and front plate
		X20	-	...	-	U/O	23	
		X32	-	...	-	U/O	23	
		X40	-	...	-	U/O	23	
		X16	-	...	-	U/O	25	Main switch with emergency - red handle, yellow front plate
		X20	-	...	-	U/O	25	
X32	-	...	-	U/O	25			
X40	-	...	-	U/O	25			
N  SWITCH WITH PADLOCKABLE HANDLE		X16	-	...	-	U/O	56	Black handle and front plate, white escutch. plate
		X20	-	...	-	U/O	56	
		X16	-	...	-	U/O	73	Main switch - black handle, front plate and escutch. plate
		X20	-	...	-	U/O	73	
		X16	-	...	-	U/O	75	Main switch with emergency - red handle, yellow front plate and escutch. plate
		X20	-	...	-	U/O	75	
H, N  SIGNAL LAMPS		X16	-	...	-	U/O	15	In a standard manner, the red lamp (220V) is built in the right bottom corner
		X20	-	...	-	U/O	15	
		X32	-	...	-	U/O	15	
		X40	-	...	-	U/O	15	
		X40	-	...	-	U/O	15	

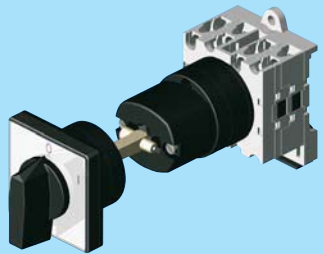
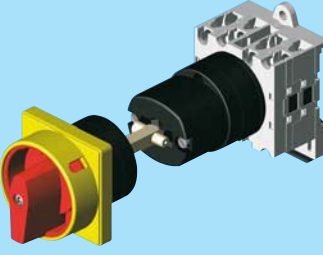
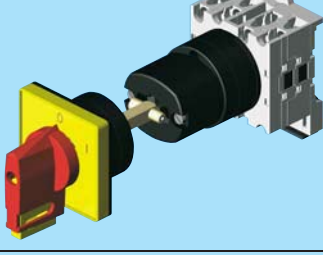
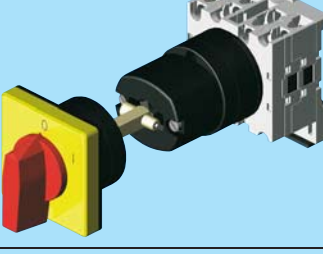
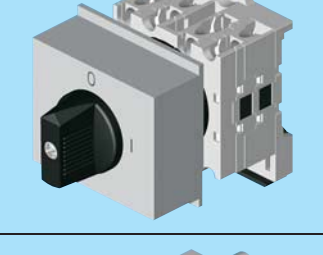
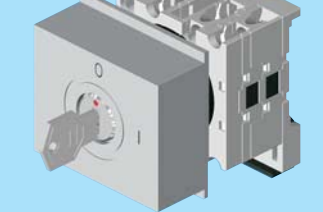
H - possibility of bigger front part  
N - possibility of front plate with title

# STANDARD DESIGNS AND OPTIONAL EXTRAS

NAME	FORM	CODE				DESCRIPTION		
		1	2	3	4			
H, N  FRONT MOUNTING		X16	-	...	-	U	Standard front mounting - front assembly □48	
		X20	-	...	-	U		
		X32	-	...	-	U	Standard front mounting - front assembly □65	
		X40	-	...	-	U		
		X16	-	...	-	U	01	Front protection IP54 (no possibility for front plate with title - <del>X</del> )
		X20	-	...	-	U	01	
		X32	-	...	-	U	01	
		X40	-	...	-	U	01	
		X16	-	...	-	U	51	Front protection IP65
		X20	-	...	-	U	51	
X32	-	...	-	U	51			
X40	-	...	-	U	51			
H, N  REAR MOUNTING		X16	-	...	-	O	Standard rear mounting - front assembly □48	
		X20	-	...	-	O		
		X32	-	...	-	O	Standard rear mounting - front assembly □65	
		X40	-	...	-	O		
		X16	-	...	-	O	01	Front protection IP54
		X20	-	...	-	O	01	
		X32	-	...	-	O	01	
		X40	-	...	-	O	01	
		X16	-	...	-	O	51	Front protection IP65
		X20	-	...	-	O	51	
X32	-	...	-	O	51			
X40	-	...	-	O	51			
H, N  SWITCH WITH ROUND PADLOCK		X16	-	...	-	U/O	06	The grey colour of handle and front plate
		X20	-	...	-	U/O	06	
		X32	-	...	-	U/O	06	
		X40	-	...	-	U/O	06	
		X16	-	...	-	U/O	23	Main switch - black handle and front plate
		X20	-	...	-	U/O	23	
		X32	-	...	-	U/O	23	
		X40	-	...	-	U/O	23	
		X16	-	...	-	U/O	25	Main switch with emergency - red handle, yellow front plate
		X20	-	...	-	U/O	25	
X32	-	...	-	U/O	25			
X40	-	...	-	U/O	25			
N  SWITCH WITH PADLOCKABLE HANDLE		X16	-	...	-	U/O	56	Black handle and front plate, white escutch. plate
		X20	-	...	-	U/O	56	
		X16	-	...	-	U/O	73	Main switch - black handle, front plate and escutch. plate
		X20	-	...	-	U/O	73	
		X16	-	...	-	U/O	75	Main switch with emergency - red handle, yellow front plate and escutch. plate
		X20	-	...	-	U/O	75	
H, N  SIGNAL LAMPS		X16	-	...	-	U/O	15	In a standard manner, the red lamp (220V) is built in the right bottom corner
		X20	-	...	-	U/O	15	
		X32	-	...	-	U/O	15	
		X40	-	...	-	U/O	15	
		X40	-	...	-	U/O	15	

H - possibility of bigger front part  
N - possibility of front plate with title

# OPTIONAL EXTRAS

NAME		FORM	CODE				DESCRIPTION				
			1	2	3	4					
DOOR COUPLING	H, N		X16	-	+	-	O 57	Door opening in any position (H version only for X16 and X20)			
			X20	-	+	-	O 57				
			X32	-	+	-	O 57				
			X40	-	+	-	O 57				
			X16	-	+	-	O 58	Door opening only in position »0« (H version only for X16 and X20)			
	X20	-	+	-	O 58						
	X32	-	+	-	O 58						
	X40	-	+	-	O 58						
DOOR COUPLING - SWITCH WITH ROUND PADLOCK	H, N		X16	-	+	-	O 87	Padlocking only in 0 - door opening in position 0 , the black colour of handle and front plate			
			X20	-	+	-	O 87				
			X32	-	+	-	O 87				
			X40	-	+	-	O 87				
			X16	-	+	-	O 88	<b>Main switch with emergency</b> - Padlocking only in 0 - door opening in position 0 , red handle, yellow front plate			
			X20	-	+	-	O 88				
			X32	-	+	-	O 88				
			X40	-	+	-	O 88				
	N		DOOR COUPLING - SWITCH WITH PADLOCKABLE HANDLE		X16	-	+		-	O 85	Padlocking (1 - 3) only in 0 - door opening in position 0 , black handle and front plate, white escutch. plate
					X20	-	+		-	O 85	
			X16	-	+	-	O 86	<b>Main switch with emergency</b> - padlocking (1 - 3) only in 0 - door opening in position 0 , red handle, yellow front plate and escutch. plate			
			X20	-	+	-	O 86				
DOOR COUPLING - EMERGENCY OFF SWITCH	H, N		X16	-	+	-	O 84	<b>Switch with emergency</b> - yellow front plate and escutcheon plate, red handle - door opening only in position »0« ( H version only for X16 and X20 )			
			X20	-	+	-	O 84				
			X32	-	+	-	O 84				
			X40	-	+	-	O 84				
	SERVICE COVER			X16	-	+	-		O 48	Snap on base mounting for the rail 35 EN 50022. Both the service cover (45 mm) and handle are adjustable in height (7 mm)	
X20		-		+	-	O 48					
			X16	-	+	-	O 48D	Fixed mounting measure			
			X20	-	+	-	O 48D				
SERVICE COVER WITH KEY		X16	-	+	-	O 49	Snap on base mounting for the rail 35 EN 50022. Both the service cover (45 mm) and key are adjustable in height (7 mm)				
		X20	-	+	-	O 49					

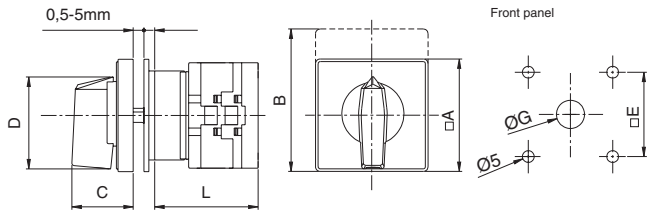
H - possibility of bigger front part  
N - possibility of front plate with title

# OPTIONAL EXTRAS

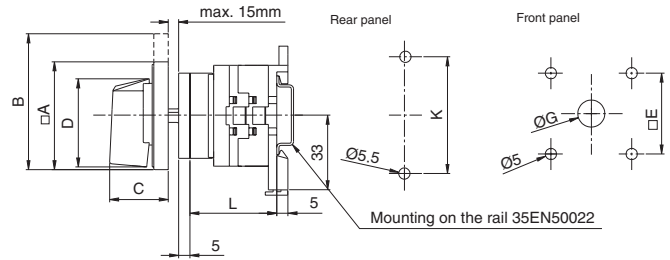
NAME	FORM	CODE				DESCRIPTION			
		1	2	3	4				
MOUNTING WITH 2 SCREWS		X16	-	...	-	U	39	Mounting with two screws (23 mm)	
		X20	-	...	-	U	39		
MOUNTING WITH 2 SCREWS (28 mm)		X16	-	...	-	U	39D	Mounting with two screws (28 mm)	
		X20	-	...	-	U	39D		
		X32	-	...	-	U	39D		
		X40	-	...	-	U	39D		
CENTRAL MOUNTING	ROTARY CAM SWITCH WITH HANDLE AND NUT	X16	-	...	-	U	09	Mounting in $\phi$ 30 mm	
		X20	-	...	-	U	09		
		X16	-	...	-	U	11	Mounting in $\phi$ 22 mm	
		X20	-	...	-	U	11		
	ROTARY CAM SWITCH WITH KEY AND NUT		X16	-	...	-	U	10	Mounting in $\phi$ 30 mm
			X20	-	...	-	U	10	
			X16	-	...	-	U	12	Mounting in $\phi$ 22 mm
			X20	-	...	-	U	12	
	ROTARY CAM SWITCH WITH LOCKABLE HANDLE		X16	-	...	-	U	41	Quick mounting in $\phi$ 22 mm
			X20	-	...	-	U	41	
			X16	-	...	-	U	42	Quick mounting in $\phi$ 30 mm
			X20	-	...	-	U	42	
ROTARY CAM SWITCH WITH HANDLE AND FRONT PLATE $\square$ 48		X16	-	...	-	U	36	Quick mounting in $\phi$ 22 mm	
		X20	-	...	-	U	36		
		X16	-	...	-	U	37	Quick mounting in $\phi$ 30 mm mm	
		X20	-	...	-	U	37		
ROTARY CAM SWITCH WITH KEY AND FRONT PLATE $\square$ 48		X16	-	...	-	U	29	Quick mounting in $\phi$ 22 mm	
		X20	-	...	-	U	29		
		X16	-	...	-	U	30	Quick mounting in $\phi$ 30 mm	
		X20	-	...	-	U	30		

# DIMENSIONAL DRAWINGS (mm)

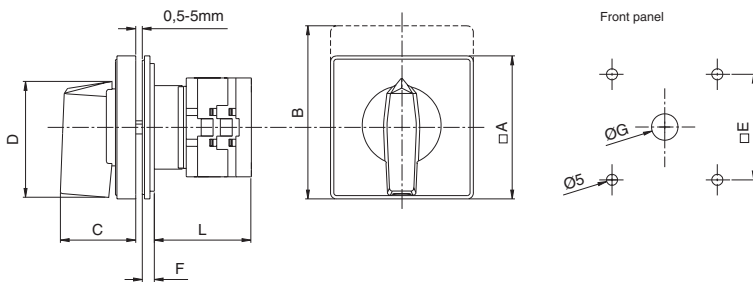
## Front mounting **U**



## Rear mounting **O**

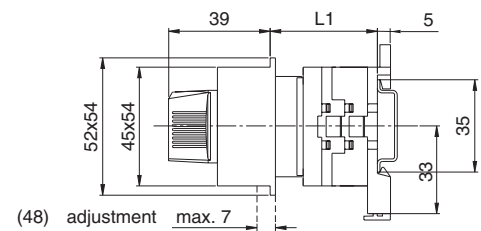
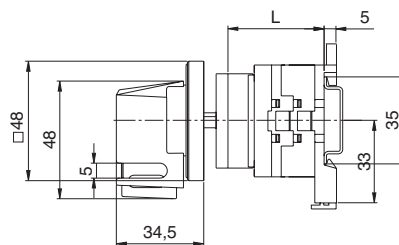
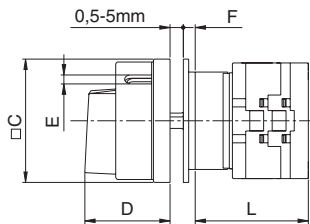


## Switches with bigger front part **H**



MARKING	DA	B	C	D	DE	F	ØG	K
X16 X20	48	60	26,5	39,5	36	5	12	52
X16H X20H	65	80	34,5	53	48	5,5	12	52
X32 X40	65	80	34,5	53	48	5,5	14	68
X32H X40H	90	110	41,5	70,5	68	7,5	14	68

## Optional extras



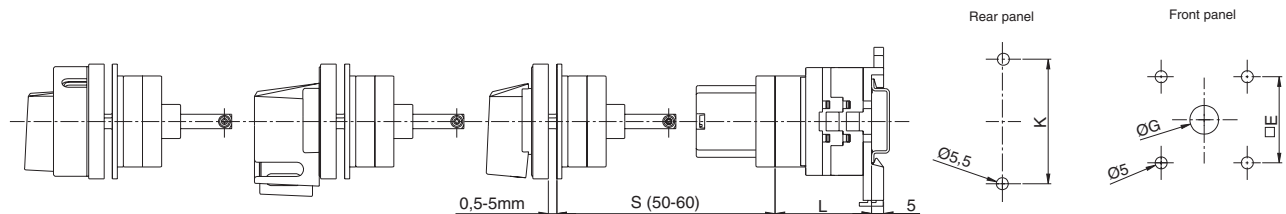
MARKING	□C	D	E	F
X16 X20	48	34,2	5	5
X16H X20H X32 X40	65	38	6	5,5
X32H X40H	90	49	7	7,5

MARKING		L1			
		1 elem.	2 elem.	3 elem.	... 12 elem.
48	X16 X20	39,5 - 52,5	48 - 61	56,5 - 69,5	133 - 146
48D	X16 X20	33	41,5	50	126,5

Switch with padlock - **06/23/25**

Switch with padlock - **56/73/75**

Service cover - **48/48D**



Door coupling - switch with padlock - **87**

Door coupling - switch with padlock - **85**

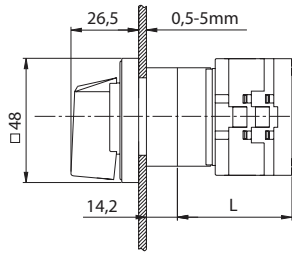
Door coupling - **57/58**

When required "S" is bigger than offered, it is necessary to be defined.

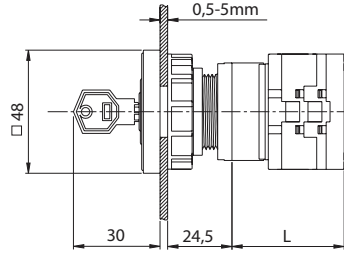


# DIMENSIONAL DRAWINGS (mm)

## Optional extras

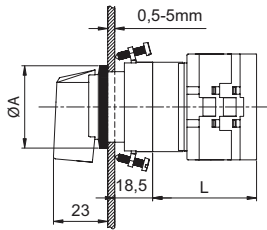
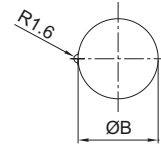


Central mounting - 20

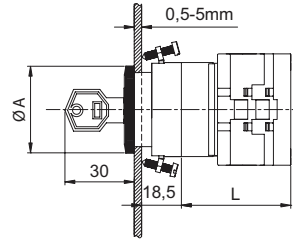


Central mounting - 29/30

Drilling plan



Central mounting - 09/11

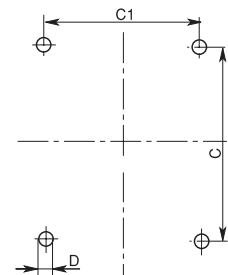
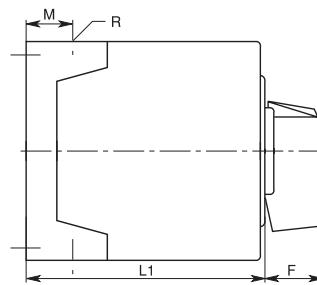
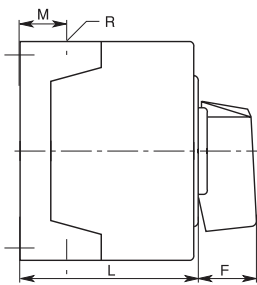
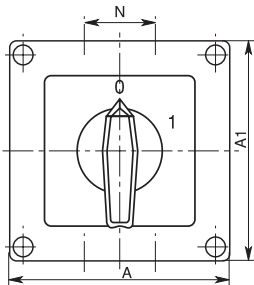


Central mounting - 10/12

MARKING	ΦA	ΦB
09, 10, 20, 30	35	30,5
11, 12, 20, 29	28	22,5

## Switch in plastic casing

P



Type	Housing size	Number of elements		A	A1	C	C1	D	F	M	N	L	L1	Protection	R(Pg)	Conduit entries	R(M...x1,5)
		L	L1														
X16 X20	90x90	1-2	3-5	90	90	79	63	4,5	25	19	30	71,3	98,3	IP42/IP65	4xPg16	or	4xM20
X32 X40	110x110	1-2	3-4	110	110	98,4	83	4,5	32	21	39,5	85,5	119,5	IP42/IP65	4xPg21	or	4 xM25

Type	L											
	1 elem.	2 elem.	3 elem.	4 elem.	5 elem.	6 elem.	7 elem.	8 elem.	9 elem.	10 elem.	11 elem.	12 elem.
X16-...-U	35	43,5	52	60,5	69	77,5	86	94,5	103	111,5	120	128,5
X16-...-O	32	40,5	49	57,5	66	74,5	83	91,5	100	108,5	117	125,5
X20-...-U	35	43,5	52	60,5	69	77,5	86	94,5	103	111,5	120	128,5
X20-...-O	32	40,5	49	57,5	66	74,5	83	91,5	100	108,5	117	125,5
X32-...-U	42,5	54,5	66,5	78,5	90,5	102,5	114,5	126,5	138,5	160,5	172,5	184,5
X32-...-O	43	55	67	79	91	103	115	127	139	161	173	185
X40-...-U	42,5	54,5	66,5	78,5	90,5	102,5	114,5	126,5	138,5	160,5	172,5	184,5
X40-...-O	43	55	67	79	91	103	115	127	139	161	173	185

Control Switches International leads the industry in supplying rotary cam switches in the United States. Our innovative products deliver the highest level of quality, unsurpassed product support and service.

Need a custom switch? Control Switches supplies both custom and standard switches for your application.

Our unique Cam Switch Assembly Department empowers us to service all our customers' special needs as they arise.

Our UL508 Value Added Department supplies you with wired and custom enclosed units for your requirements.

Contact Control Switches, the Switch Experts, for all your switch needs!

**Switch Styles:**

OPEN  
ENCLOSED  
PRE-WIRED  
CUSTOM  
STANDARDS

**Applications:**

BYPASS  
VOLTAGE CHANGE  
DISCONNECT  
INSTRUMENT  
MOTORS  
CODE  
MULTI-STEP  
CHANGEOVER  
TRANSFER



2425 MIRA MAR AVENUE, LONG BEACH, CA 90815  
P. O. BOX 92349, LONG BEACH, CA 90809

**CONTROL SWITCHES INTERNATIONAL, INC.**

PHONE: (562) 498-7331 • (800) 521-1677 • FAX: (562) 498-5894  
www.controlswitches.com • Email: sales\_info@controlswitches.com

