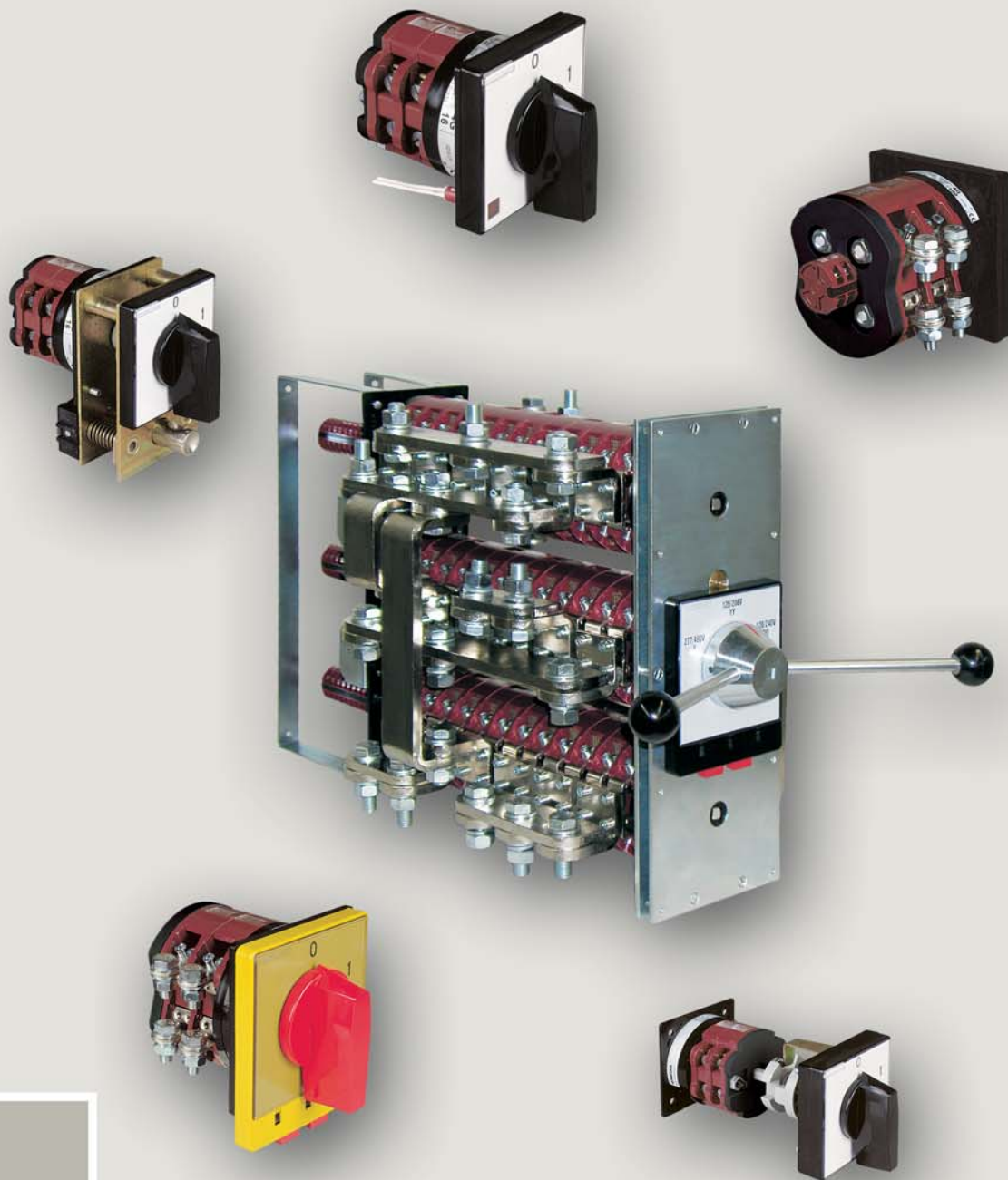


# CONTROL SWITCHES

"A"  
and  
"Z"  
S  
E  
R  
I  
E  
S



**csii**<sup>®</sup>



## ROTARY CAM SWITCHES

Control Switches International, Inc.

## GENERAL

Control Switches International have been designing and selling cam switches for over 50 years. Their rotary cam switches stand above the competition because of their rugged industrial grade designs. Due to their small dimensions and 4-hole mounting construction, they are ideal for almost any application. These switches integrate high quality insulation material with silver alloy contacts. This results in high making and breaking capacities and a long operation life. CSII switches are available in a large range of switching capacities, from 15 to 1200 A, with ratings up to 600 V AC. They are available to withstand surge capacities up to 18000 A. Our rotary cam switches can be built to customer specifications. They are intended for multiple switching operations in main as well as in auxiliary circuits:

☐ as **motor switches** they are designed for direct-online starting and stopping of single-phase and three-phase motors. They also come out as star-delta switches, reversing switches, changeover switches, solenoid locking option also available.

☐ in auxiliary circuits they are assembled in compliance with the switching program according to preference: **switches for control, signalling and measuring circuits**

☐ **switches, selector switches and step switches** e.g. for transformers and welding apparatuses

☐ **group switches** e.g. for switching operations of resistors and heaters

☐ **twisted switch** with automatic return

Rotary cam switches A and Z series are built in accordance with the following standard: IEC947-1, -3, IEC 204, VDE 0660, VDE 0630, as well as many other national standards.

By the application of double-pole breaking and contact elements plated with a special silver alloy resistant to the electric arc, the switches of high breaking capacities and electric durabilities are obtained. Standard switch can have maximum twelve switching elements. At special request the switches consisting of more than 12 elements may be supplied. The switches range from 400 A to 1200 A by paralleling contacts. The switches can be executed, as it is tested with 30°, 60° or 90° switching angle.

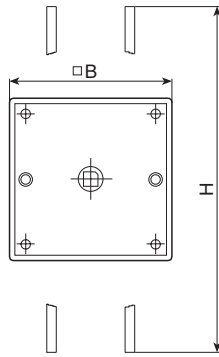
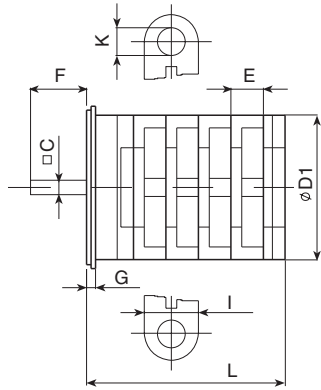
## TECHNICAL DATA

SWITCH TYPE				A 200	Z 315	A 400	Z 630	A 900	A 1200
Rated insulation voltage	U <sub>i</sub>	*UL/CSA	V	600	600	600	600	600	600
		IEC/VDE	V	690	690	690	690	690	690
Rated thermal current	I <sub>th</sub>	*UL/CSA	A	200	315	400	630	900	1200
		IEC/VDE	A	200	315	400	630	900	1200
Rated short-time withstand current	I <sub>cw</sub>	1 sec	A	3300	5200	6500	8000	14500	18000
		3 sec	A	2000	3200	3800	6500	9200	12000
		10 sec	A	1100	1800	2000	3600	5500	8000
		60 sec	A	460	800	850	1500	2400	3600
General use AC1/AC21		600 V	A	200	315	400	630	900	1200
Max. conductor size	Cable lug 1x		AWG	3/0	400	500	1500	-	-
	Flat connection 2x		mm	-	20x5	30x5	40x5	60x5	40x10

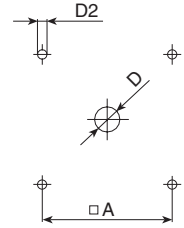
\* UL pending

# DIMENSIONAL DRAWING (mm)

## U - Front mounting



## Drilling plan



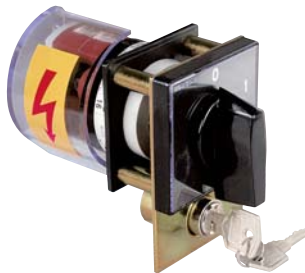
Type A or Z	Marking											Number of elements												
	□A	□B	□C	ØD	ØD1	ØD2	E	F	G	H	I	ØK	1	2	3	4	5	6	7	8	9	10	11	12
A200/Z315	104	132	10	16	120	5.3	29	34	6	140	20	10.5	77	107	136	166	196	226	284	314	343	373	402	432
A400	104	132	10	16	120	5.3	29	34	6	170	45	13	-	107	-	166	-	226	-	314	-	373	-	432
Z630	104	132	10	16	120	5.3	29	34	6	190	74	17.5	-	-	136	-	-	226	-	-	343	-	-	432
A800	104	132	10	16	120	5.3	29	34	6	260	50	17.5	-	107	-	166	-	226	-	314	-	373	-	432
A1200	104	132	10	16	120	5.3	29	34	6	260	80	17.5	-	-	136	-	-	226	-	-	343	-	-	432

\* - For the switches size A3 with 7 and more elements see the dimensional drawings with two distribution devices.

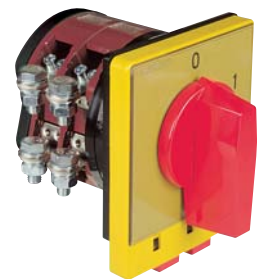
## OPTIONAL EXTRAS\*



AUXILIARY CONTACTS



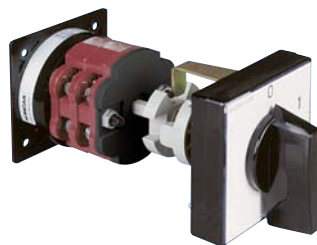
KEY LOCK OPERATORS



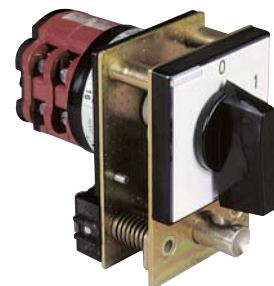
PADLOCK DEVICES



SIGNAL LAMPS



DOOR CLUTCHES



PUSH TO TURN OPERATORS

\*consult factory for other available options

Control Switches International leads the industry in supplying rotary cam switches in North America. Our innovative products deliver the highest level of quality, unsurpassed product support and service.

Need a custom switch? Control Switches supplies both custom and standard switches for your application.

Our unique Cam Switch Assembly Department empowers us to service all our customers' special needs as they arise.

Our UL508 Value Added Department supplies you with wired and custom enclosed units for your requirements.

Contact Control Switches, the Switch Experts, for all your switch needs!

**Switch Styles:**

OPEN  
ENCLOSED  
PRE-WIRED  
CUSTOM  
STANDARDS

**Applications:**

BYPASS  
VOLTAGE CHANGE  
DISCONNECT  
INSTRUMENT  
MOTORS  
CODE  
MULTI-STEP  
CHANGEOVER  
TRANSFER



2425 MIRA MAR AVENUE, LONG BEACH, CA 90815  
P. O. BOX 92349, LONG BEACH, CA 90809

**CONTROL SWITCHES INTERNATIONAL, INC.**

PHONE: (562) 498-7331 • (800) 521-1677 • FAX: (562) 498-5894  
www.controlswitches.com • Email: sales\_info@controlswitches.com

**csii**®