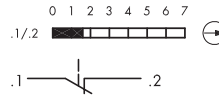
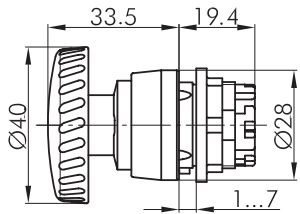


**MTO**, Modular Contact  
Momentary Action, 1 NC,  
Marking of connections, 1 and 2



**ML**, Lamp Module, with BA9s socket  
max. 250V 2W



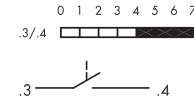
**RV\_356**

**FZR9**

- FZR9-6** 6 Volt/ 1.8 W (300 mA)
- FZR9-12** 12 Volt/ 2.0 W (166 mA)
- FZR9-24** 24 Volt/ 2.0 W (80 mA)
- FZR9-36** 36 Volt/ 2.0 W (55 mA)
- FZR9-48** 48 Volt/ 2.0 W (40 mA)
- FZR9-60-1** 60 Volt/ 1.2 W (20 mA)
- FZR9-65-2** 65 Volt/ 2.0 W (33 mA)
- FZR9-130** 110 Volt/ 2.0 W (18 mA)



**MHR3**



**MTI**, Modular Contact  
Momentary Action, 1 NO  
Marking of connections,  
3 and 4



**Stickable Nameplates**  
2 layers, engraved inscription  
appears in black  
blank, engraved, printed

**BZ23U, BZ23G, BZ23B ...**



**RABT**  
50x30 mm



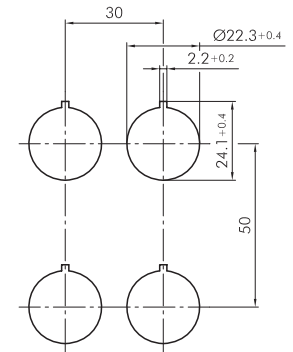
**S22**  
Hexagonal Mounting Tool,  
width across flats 24 mm  
facilitates tightening of the  
locking rings



**NAS22**  
Yellow Nameplate for  
Emergency-Off Pushbuttons  
75 mm diam., self-adhesive

**RONDEX-Range - Mounting Dimensions**

Cut-out diam. 22.3 mm  
Housing diam. 28 mm  
Mounting grid  
(incl. nameplate  
holder type RABT)  
30x50 mm  
in accordance with  
DIN EN 50007.



**RV356MTOMTIML 12**

Schlegel, E-Stop, Lamp-12V  
1NO/1NC, Turn-to-release

Material List

RV356	Red Operator
MHR3	Contact Holder
MTI	N/O Contact
ML	Lamp Module
MTO	N/C Contact
FZR9-12	12V Lamp

Optional Items

RABT	Nameplate Holder
BZ23B-E-STOP	Nameplate
NAS22	Yellow Nameplate



2425 MIRA MAR AVENUE, LONG BEACH, CA 90815

562/498-7331 · FAX 562/498-5894 · 800/521-1677

Web Site: www.controlsswitches.com · email: sales\_info@controlsswitches.com